

COSTING



Calculation of sheet metal parts from laser, plasma, gas and waterjet cutting machines. Faster and more accurate than ever before.

A typical laser machine can cut material with a purchasing price of at least 2 million euro per year. You need to know exactly how much material an order is going to use. PROfirst has a revolutionary new way of digitalising and nesting customer parts.

Less than 30 seconds to digitalise and nest a part to determine the exact cost of material required for a quotation. Not even your machine programming system is that fast. Paper faxes or files such as DXF / DWG / GEO / JPG or PDFs are digitalised and nested without any CAD drafting knowledge.

Price of part Quotation: 89 Customer: MUSTERFIRMA Machining time: 14:30:20 Total time: 27:38:54 Margin Gross: 28.8% Margin Net: ...

Pos	Article	Ref.	Article	Pict	Material type	Thickness	kg	Qty	Part p
9	8	A235-569-4546	1		S235	2	4,414	300	7,57
7	erzuechnitt-n125				1.4301	2	2,252	50	15,7

Transport costs 90,00 € Transport incl. Final % 0,0 %
Total weight 3641,9 Kg Delivery 4 Tage % Cust. 0,0 %
Price without transport 15487,70 €
Profit 1592,94 €

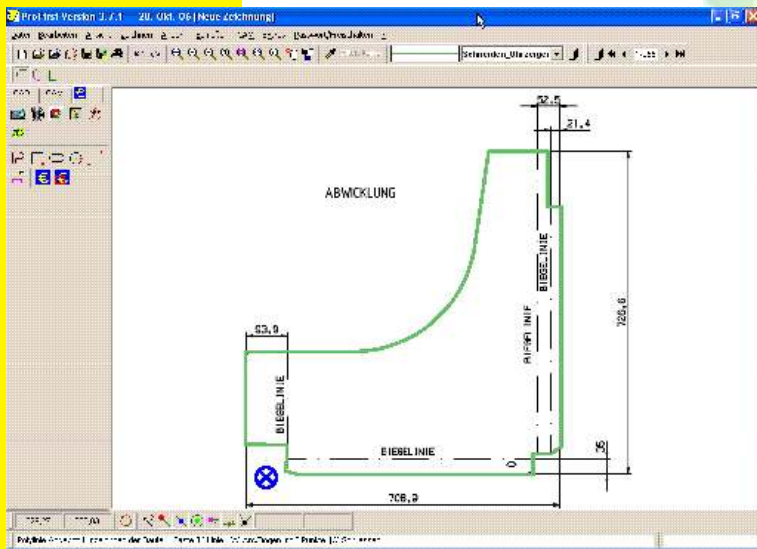
Internal contours
Circle
Quantity Diameter drill counter-si tap
Rectangle
Quantity Length Width
Oblong
Quantity Diameter Length

Manufacture
Speed large contour 7300 mm/min → Time per contour 00:00:05.00
Speed medium contours 1100 mm/min → Time per contour 00:00:05.00
Speed small contours 1100 mm/min → Time per contour 00:00:05.00
Marking speed 3000 mm/min Machine hourly rate 150,00 €

Results
Sheets 3 Machining cost 3,5 + margin 15 % = 4,02 €
Pierces 2 Material price 10,66 + margin 10 % = 11,73 €
Length lead-in/lead-out 13 mm Reusable internal waste larger 0,00 Total cost 15,75 €
Large contour: 2674 mm Machine time 00:26:44
Medium contour: 0 mm
Small contour: 0 mm
marking 0 mm Total time 00:36:56

Scanned and digitalized in 10 seconds

Forget complicated calculation of cutting length and useless outer rectangle nesting
Win more orders because your quotation gets there first
Win more orders with good realistic prices based on precise material calculation



Make precise quotations with all types of requests:

Use any CAD file data directly when available (DXF, DWG, GEO, DSTV, EMF, WMF)

Use any common picture format (PDF, BMP, JPG, TIF, PNG) to digitalise the part.

Make quotes directly from PC fax systems.

Use our camera system to digitalise paper faxes within 2 seconds. Also use any standard scanner with Twain interface.

Fast data entry for standard forms rectangles, circles, oblongs etc. Library of 50 standards parts such as cones, flanges etc.

We supply a complete machine database with all cutting data, speeds, pierce times, small/medium/large contours, foil removal - loading unloading time ...

Multi-head machine are supported perfectly.

We offer a complete system that includes other steps such as bending, programming costs, packaging, drilling, tapping, punching welding, ...

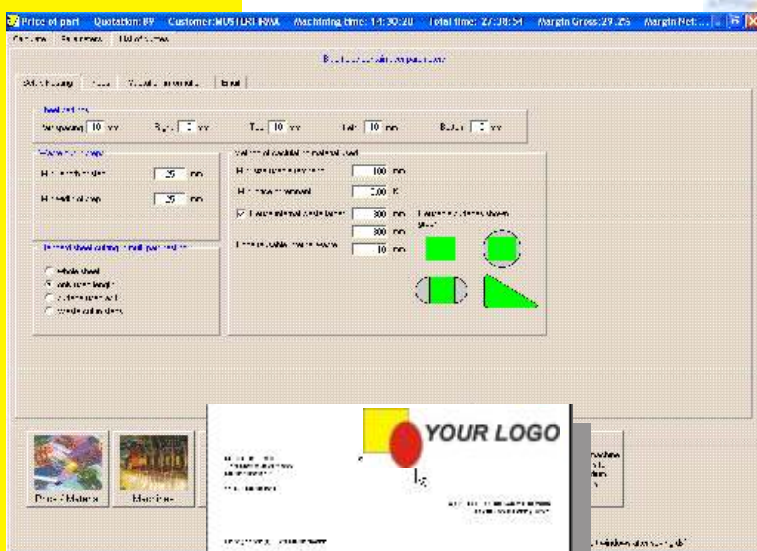
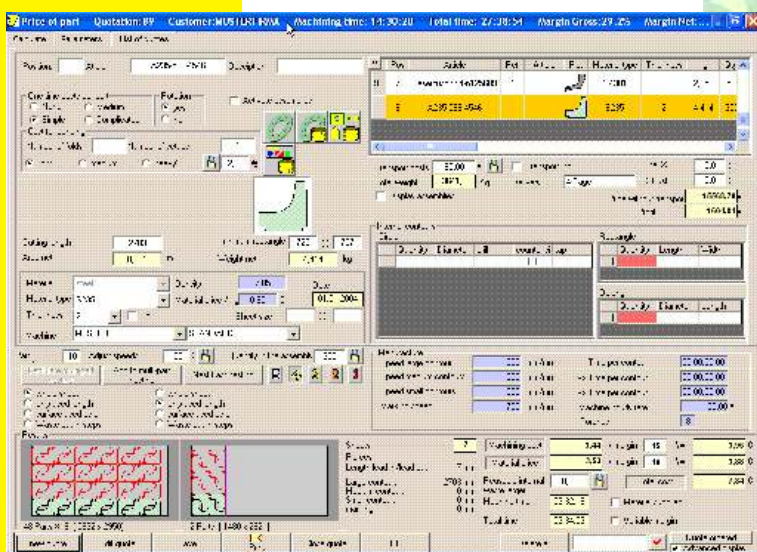
Any other production step can be added such as painting, galvanising,...

Transport costs can be calculated using the exact weight of the parts with transport zones etc.

Large remnants can be taken into account for fairer pricing.

Quotations can then be printed in a freely configurable format and sent directly to the customer as a PDF file with a 1 click Email function.

All data is freely available for export to existing ERP or quotation software.



TOL Computersysteme GmbH
 D-83355 Grabenstätt, Germany
 Tel. +49 8661 98 396-0, Fax -99
www.profirst-group.com
info@tolsoftware.com

