

Improvements in LogiTRACE unfolding software Version 14

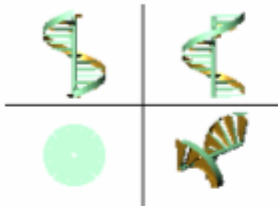
LOGITRACE

Unfolding software Version 14
New modules

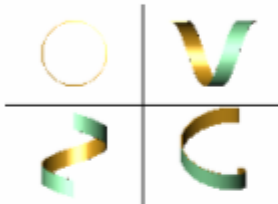


Starter Kit

Helical staircase

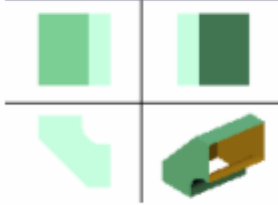


Helical side to staircase

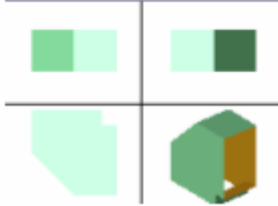


Ducting kit

Rectangle 0R1B

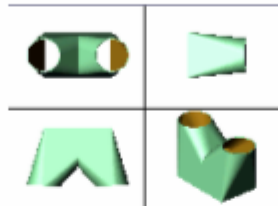


Rectangle 1R1B

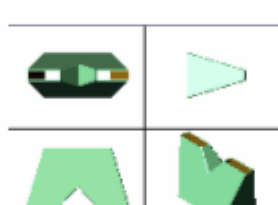


Kit 1

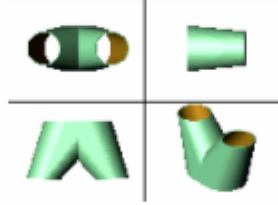
Trouser Rectangle/Circles



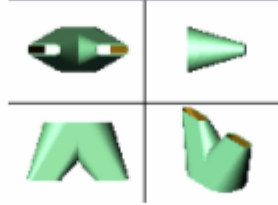
Trouser Rectangle/Rectangles



Trouser Oblong/Circles



Trouser Oblong/Oblongs



Trouser Circle/Ellipses

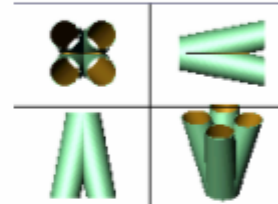


Kit 2

Trouser 3 outputs

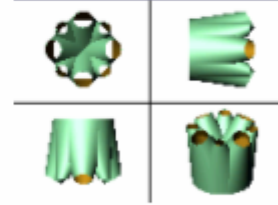


Trouser 4 outputs

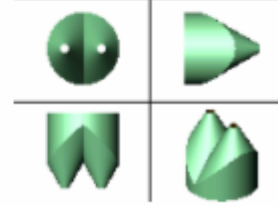


Kit 3

Trouser multi outputs

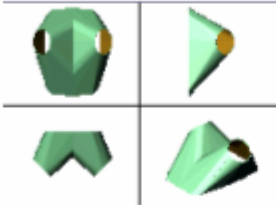


Trouser cylinder to cones



Expert Kit 2

Trouser with free sections



Combi figure much easier to use

You recognise the part in the tree at the right because a small graphic is used.

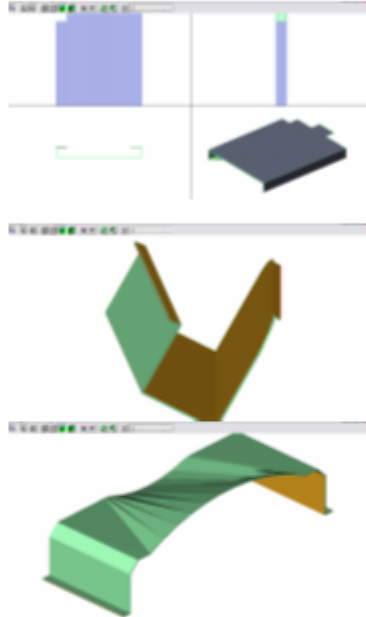
Parts can even be set to different colours to make them clearer.

You can now select which side of the part is to be trimmed.

Expert Kit 1

New module - Surface XZY Allow lots of new parts

You can make parts that were previously not possible using the simple XYZ interface.



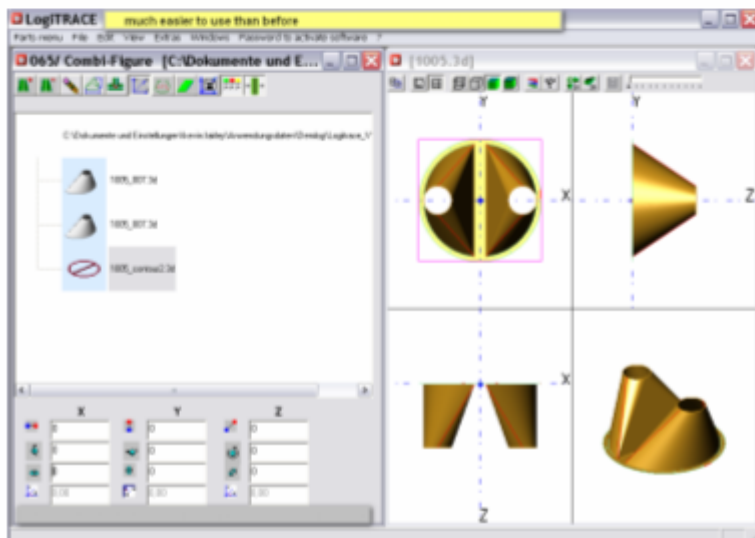
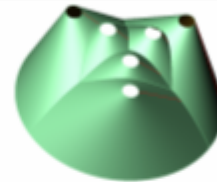
Improvements for all modules

Improved dimensioning

When you mark out parts by hand it is best to select only 24 construction lines. In this case we dimension all constructions lines, the spacing and no longer shorten the unfolding as in previous versions.

Calculate part of a part

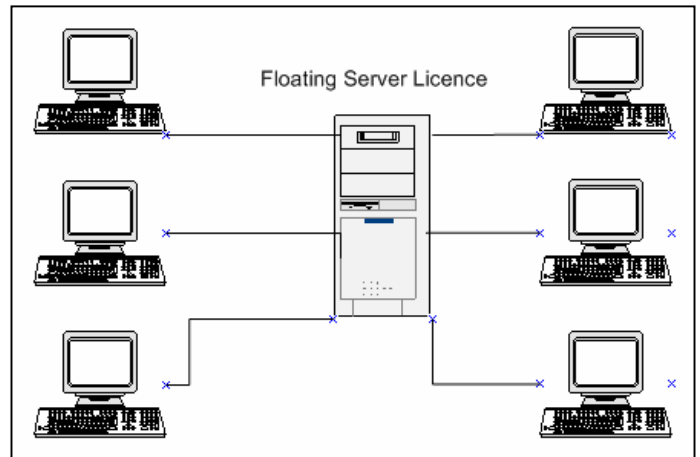
It can be very interesting to calculate only part of an unfolding. Using the input RE in certain modules this is now possible.



Improvements in LogiTRACE unfolding software Version 13 2008

Optional floating server licence means anyone on the network can use LogiTRACE

The optional floating server licence module allows any user connected to the network to work with LogiTRACE. The server dynamically assigns the licence to who ever wants to use it, so the same number of users can use LogiTRACE simultaneously as the number of licences. This makes this powerful tool LogiTRACE available to everyone on your network.



Optional USB Key allows you to work on any PC



Windows® Vista, Terminal Server and XP compatible

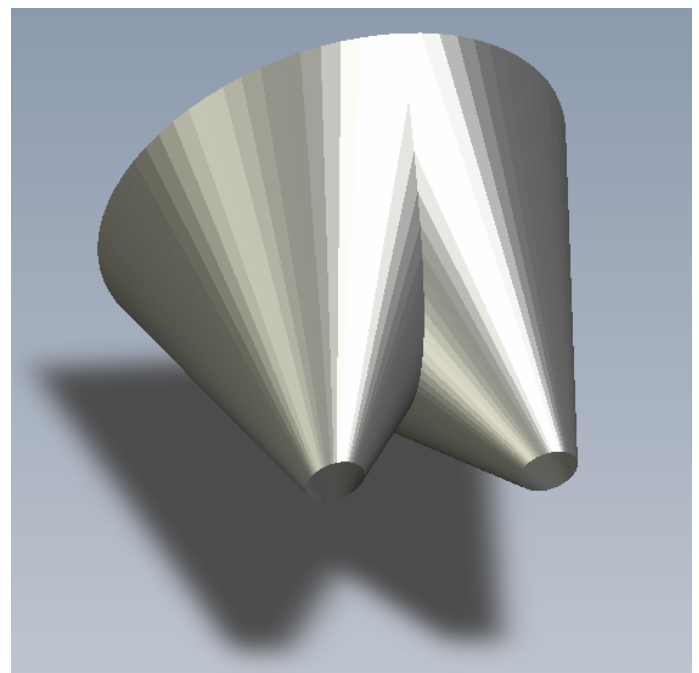


Complete Vista and Terminal Server compability. LogiTRACE is a modern product set for the needs of the future.


Output of 3D files in STL-3D

Format

Parts can be output in 3D STL format. This format can be read into many 3D CAD programs such as Solid Works.

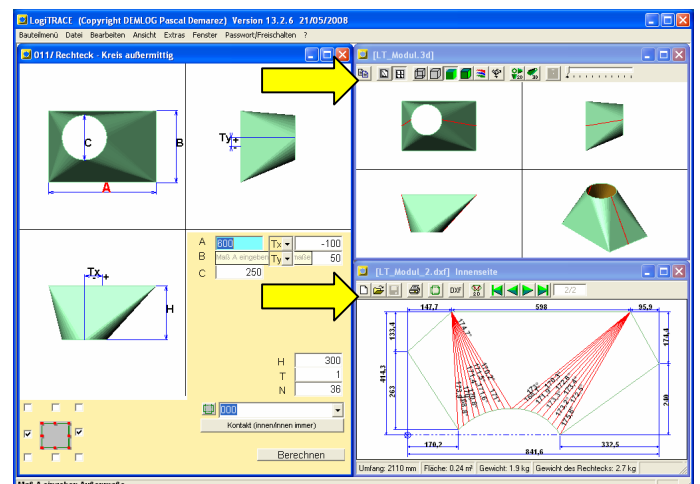


Improved file saving

Don't forget when you click on  to save a file to check the "Save in" folder at the top of the dialogue box. That way you save both your LogiTRACE input in a ".LTR" file and the DXF files in the any folder you want. LogiTRACE then remembers this folder for the next time.

Even easier to use with Symbols directly in the correct windows

LogiTRACE V13 really is easier to use than the well loved previous versions. The symbols are directly next to the windows in which they are used. A user can just sit down in front of the program type in his dimensions and output a perfect DXF file a the drop of a hat.

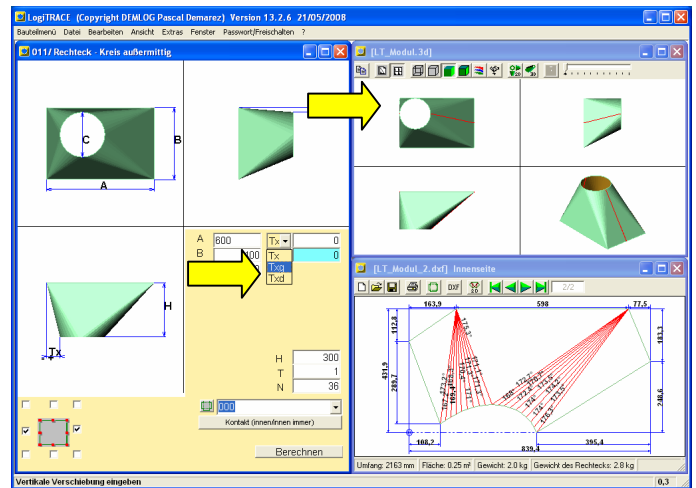


Intelligent dimensioning of important parts

More important parts have intelligent dimensioning meaning you can define the part using the dimension available. This saves making a drawing or calculating new dimensions. Especially useful now for modules with axis offsets.

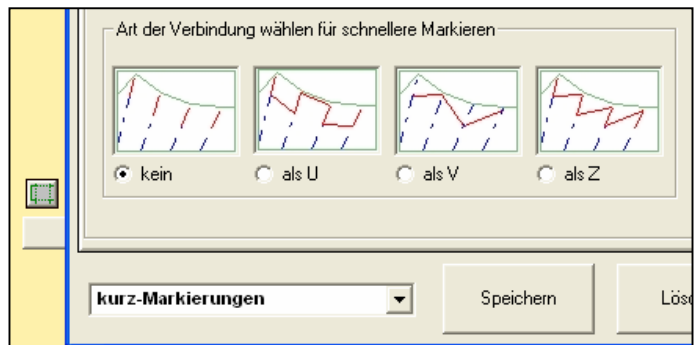
Double the number of different parts now available directly in the starter kit

Previously in version 12 only 19 parts were available. The start kit now contains 35 different parts.



Faster marking of fold positions - 400% faster than previously when marking with plasma machines, water-jet or laser

LogiTRACE connects automatically the markings in a V W or Z form saving the marking head from having to switch off/on and raise/lower the head each time.



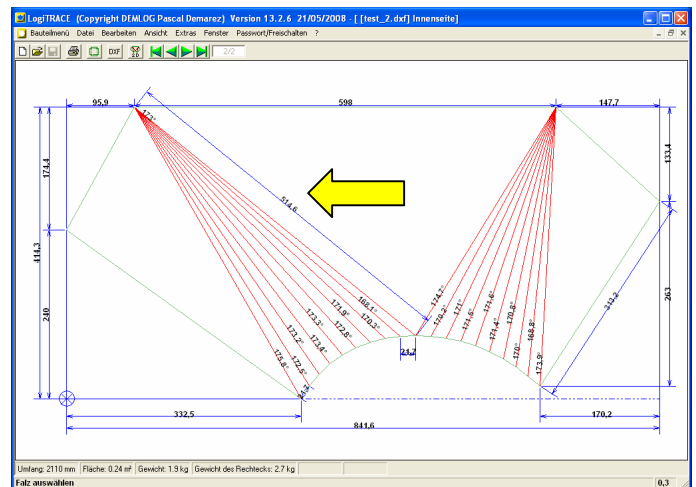
Any dimension can be picked directly of the drawing even without using CAD software

LogiTRACE is almost perfect in that it automatically dimensions every drawing. If any important dimensions are missing you can position them directly with the mouse after you have saved the drawing.

The bends position and angle is defined directly in the dxf file ready for importing into Bystronics Bybend© Software

Bybend dimensioning

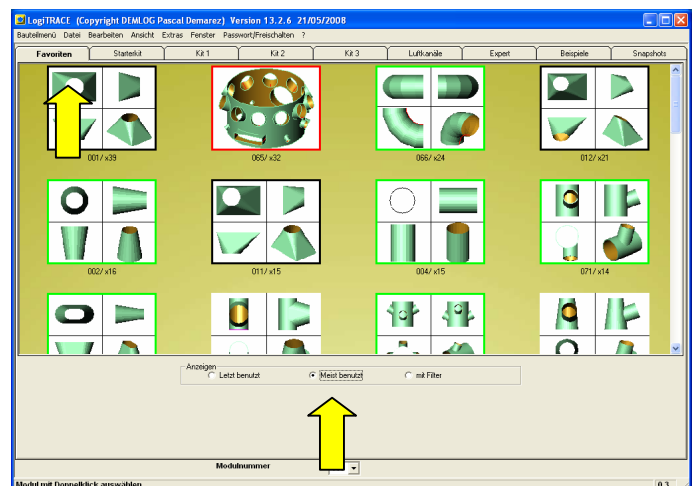
DXF files from LogiTRACE now contain direct information that defines the bend position and angle when read into Bystronics Bybend© software.



Favourites show you the parts that you use the most and help you to find them quickly

The favourites window shows the parts that you have used the most. This saves time hunting in LogiTRACE's extensive list of parts.

This function is sure to become one of your favourites just like LogiTRACE will be one of your favourite user friendly tools.



Improvements in LogiTRACE unfolding software Version 13 2008

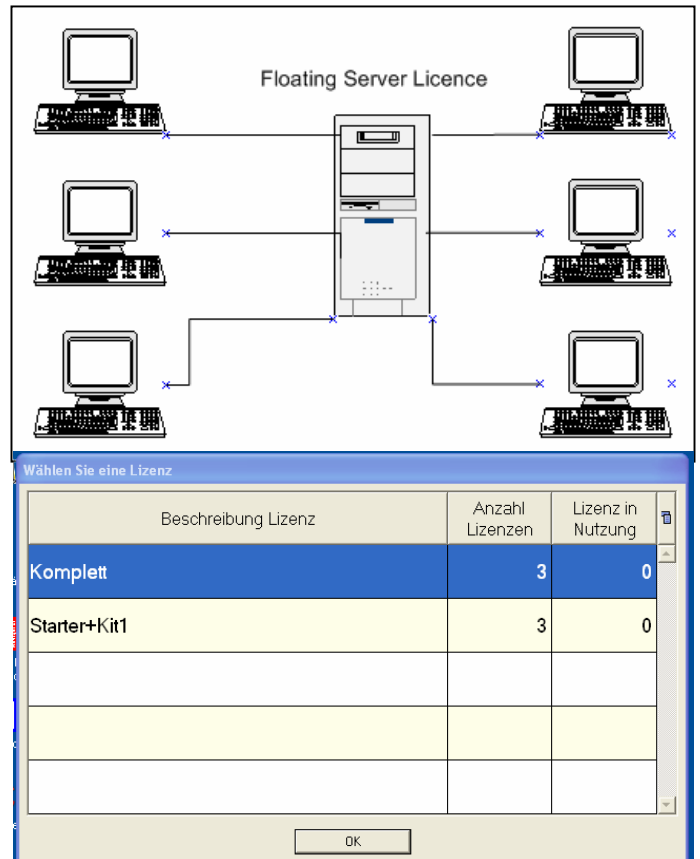
Optional floating server licence means anyone on the network can use LogiTRACE

The optional floating server licence module allows any user connected to the network to work with LogiTRACE. The server dynamically assigns the licence to who ever wants to use it, so the same number of users can use LogiTRACE simultaneously as the number of licences. This makes this powerful tool LogiTRACE available to everyone on your network.

Improvements in the server licence allows now for several licences with different amounts of modules-

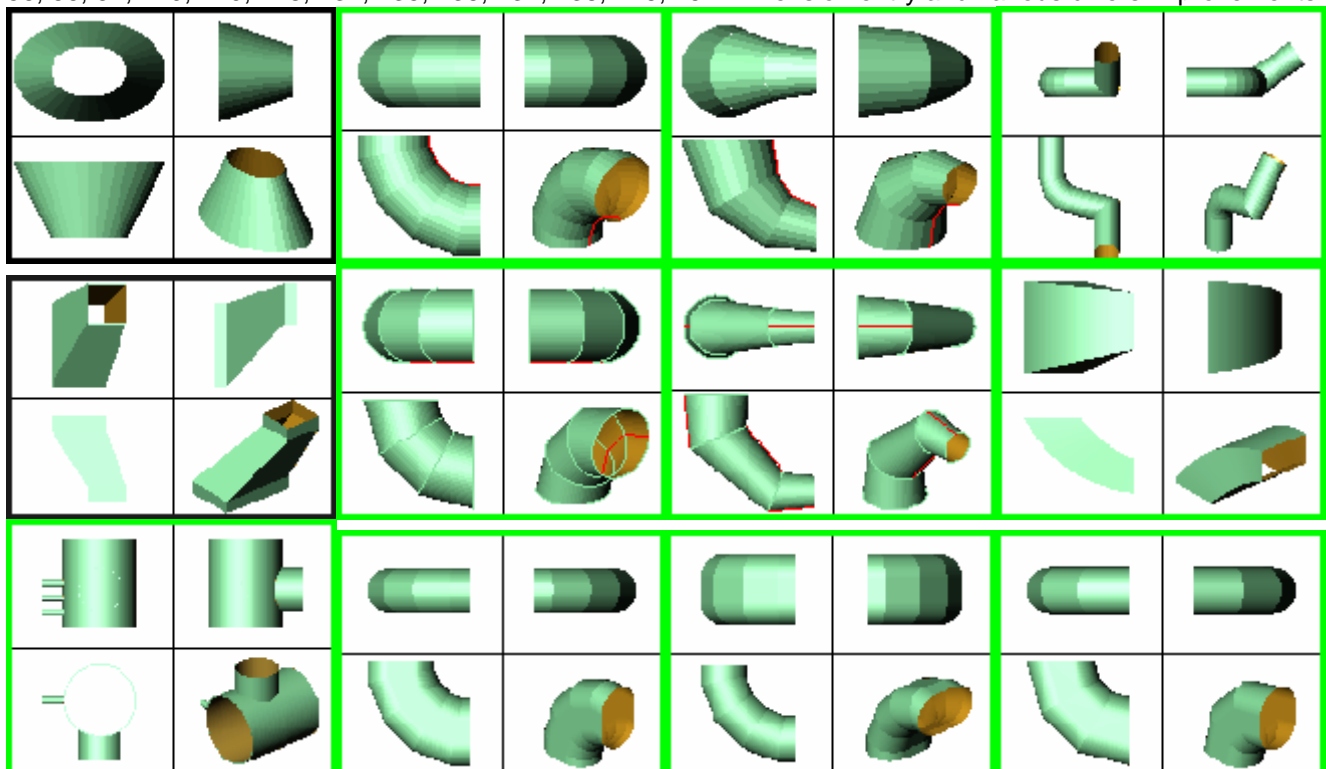
Improvement in displaying the dimension lettering A B C D E F

A few graphic cards still had problems displaying the dimensioning lettering. This important feature of LogiTRACE's very clear data entry screen was further improved.



Following modules were improved:

56, 66, 67, 119, 120, 128, 134, 135, 136, 137, 138, 146, 152 Dimension entry and various divers improvements



Improvements for file paths and folders for Windows Vista

Paths in which LogiTRACE stores file have been adapted for Vista

Advantages LogiTRACE unfolding software Version 12.60



New module rectangle with inclined surface

New module for rectangle profile with inclined surface. A commonly used part with intelligent dimensioning with the length either on the short, long or centre of the profile.

Use of AutoCAD and PROfirst CAD directly from LogiTRACE improved

The first time you start LogiTRACE we now ask which CAD program you want to use. That way when you click on the 2D or 3D symbol or windows in LogiTRACE we automatically start your desired CAD and open the unfolding or 3D model of the part from LogiTRACE.

Fast access to expert support via the internet using our DESKSHARE remote support module

With one click from LogiTRACE you can start our DESKSHARE remote support module. This allows us to see your screen and help you directly. This is completely secure using SSL coding technology which is completely secure. We only see your screen when you want us to and you enter the constantly changing code number. No access is possible at any other time. One hundred percent secure yet really easy and quick to use.

Improvement in converting lines to arcs

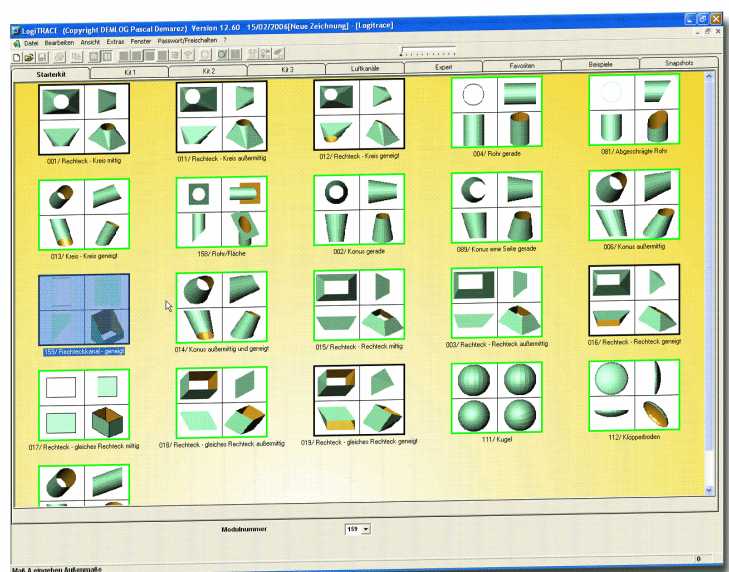
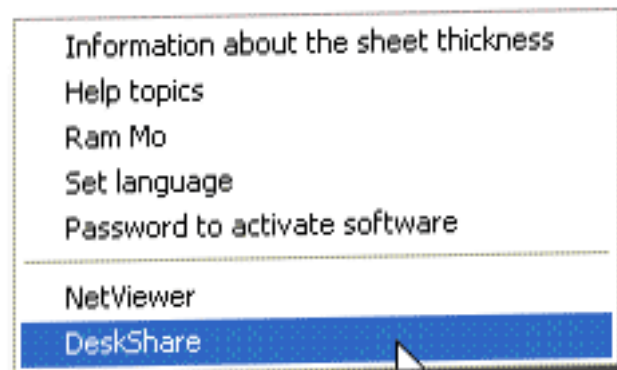
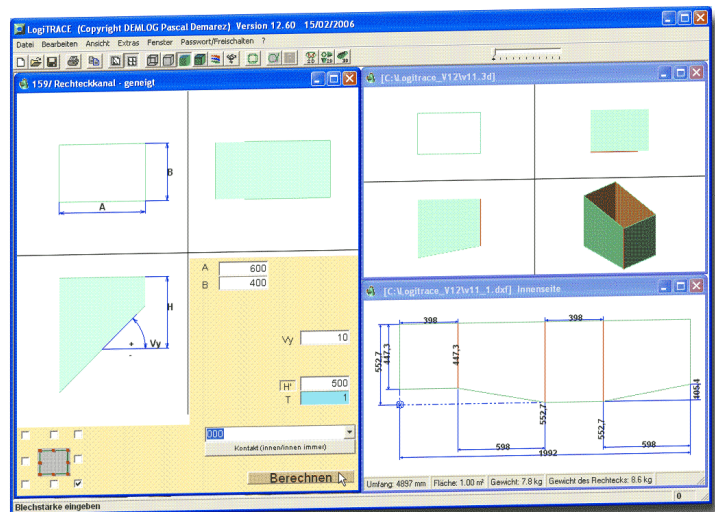
Modules with pipes need the large number of lines that are calculated converted into arcs. This has been improved in this version.

Important parts can be found quicker with the improved layout

Treatment of Inches

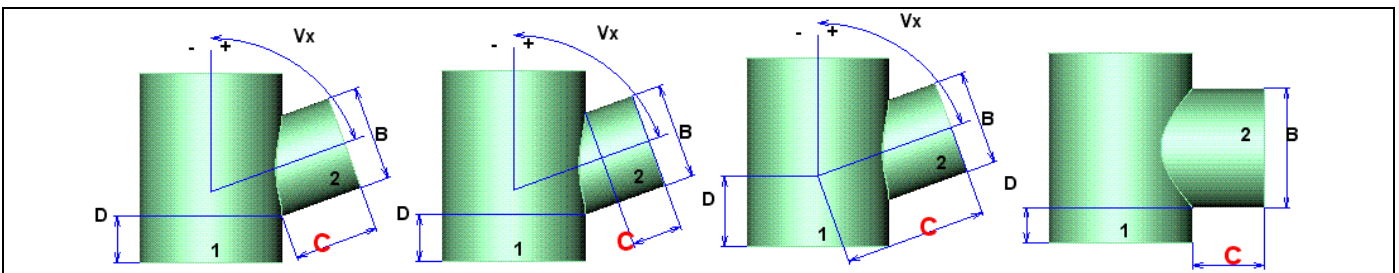
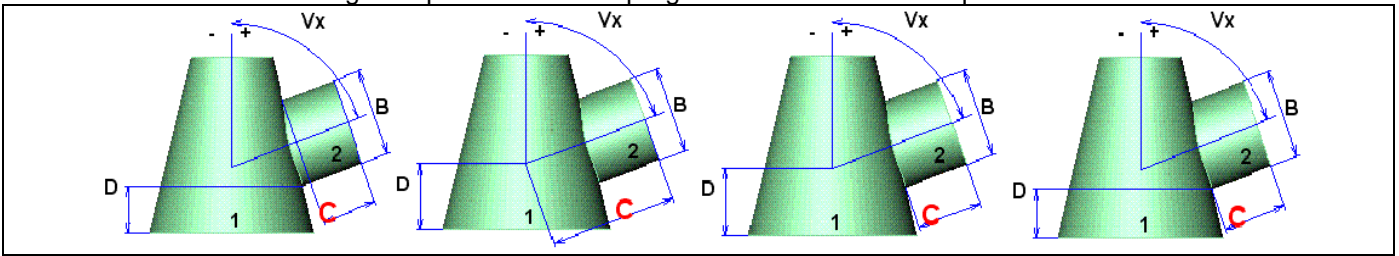
The treatment of inches has been improved. When using inches we automatically use a list of setup files for seams etc which have been adapted with values in inches

Many other small improvements not listed here.



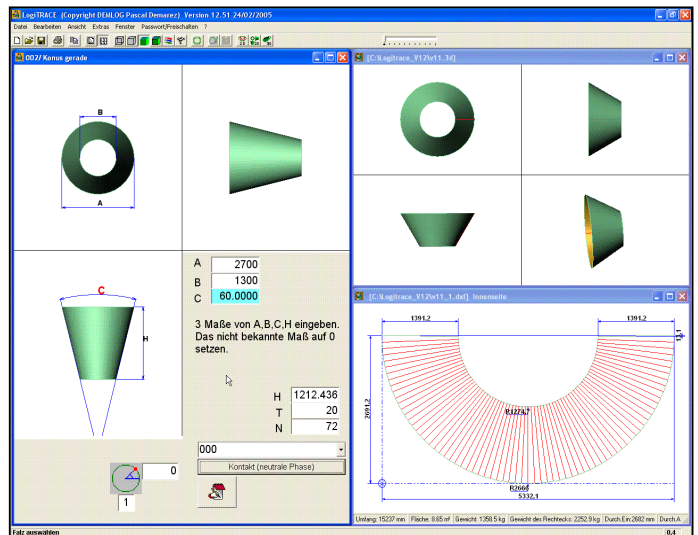
Intelligent dimensioning of important parts (076, 083, 084, 081, 158)

In several important parts there are several ways to dimension the parts. We have now changed this dimensioning to allow you to enter the dimensions that are known. The other dimensions are calculated automatically. This saves lots of tedious drawing of the parts in 2D CAD programs to work out the requested dimensions.

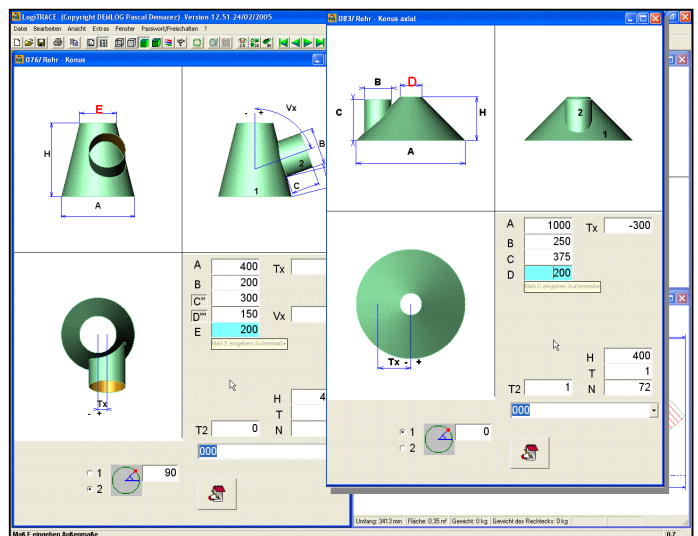


New module for a straight cone or reduction

Here you can enter any 3 of 4 known dimensions. The 4th dimension will be calculated automatically. This helps splitting cone that are too high to fit on the available sheets.

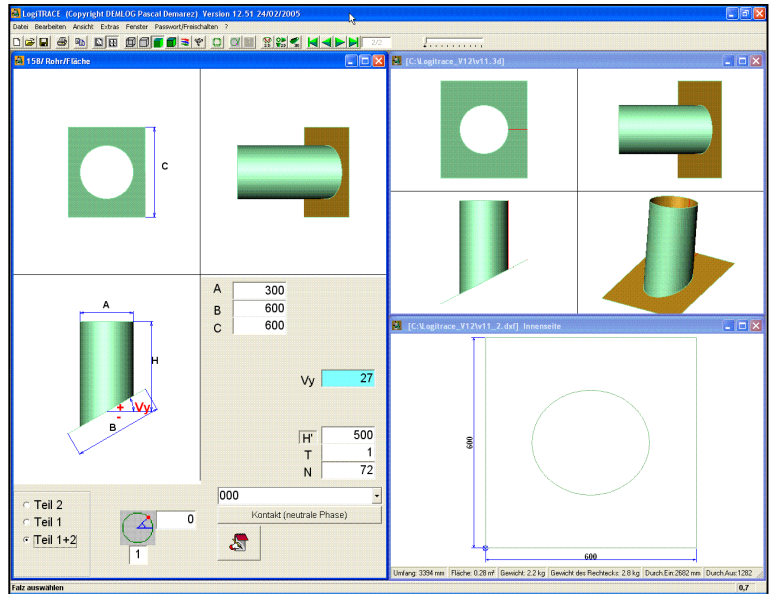


Modules (076, 083) for pipe with cone completely redone to obtain better smoother curves on the intersections.



New module pipe with surface. (158)

Useful to chimney though roofs.



LogiTRACE with greatly improved INCH interface

Improved AutoCAD interface

Improvements in module combi-figure for parts with more than 11000 construction lines.

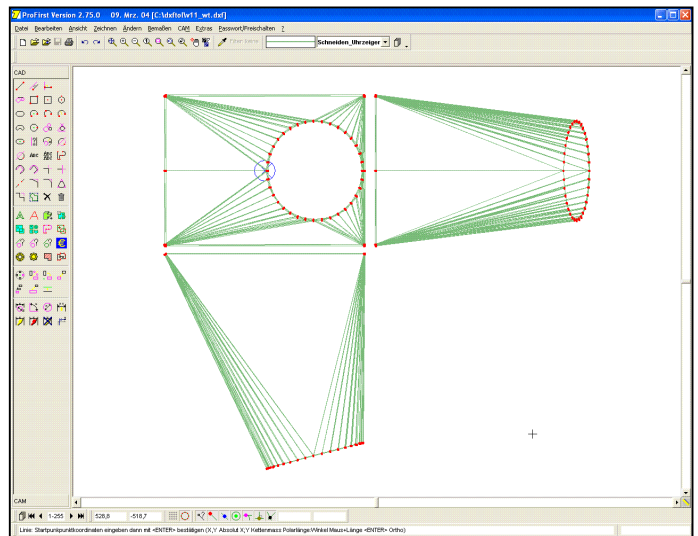
Maximum number of parts in a project increased to 300

Production orders can be stored by Logitrace and used to read in parts automatically into other CAM systems like PROfirst CAM

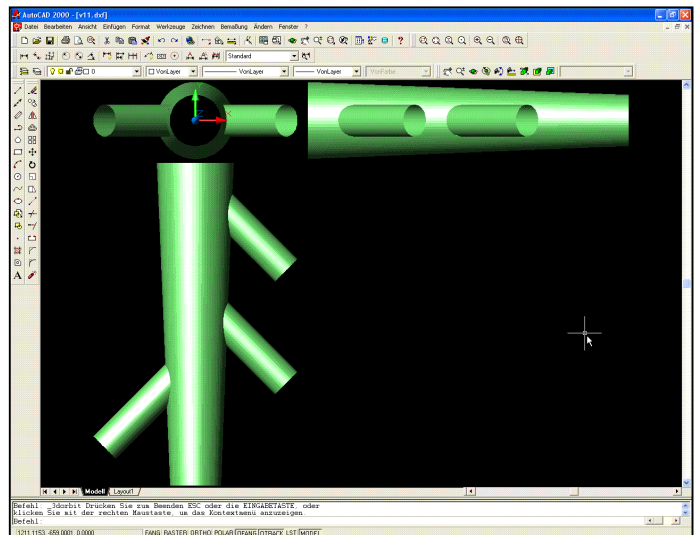
3 views of the part created automatically in any CAD Program

Now with one mousclick you obtain 3 views of the part in your standard 2D- CAD program such as PROfirst CAD or AutoCAD.

This is great to check dimensions and save tedious drawing of part in order to obtain précis dimension.



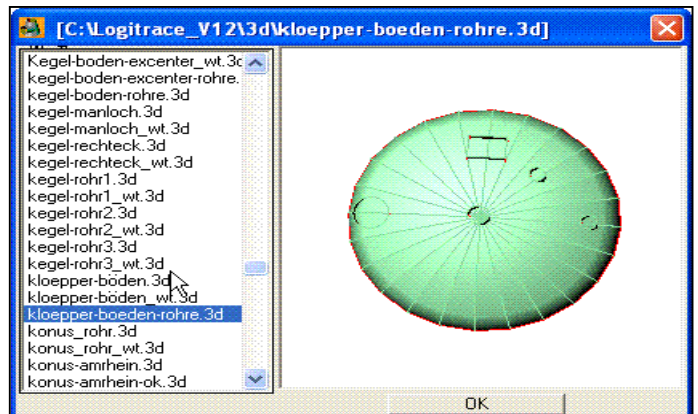
Part can be easily read into AutoCAD as a 3D model with one mous click.



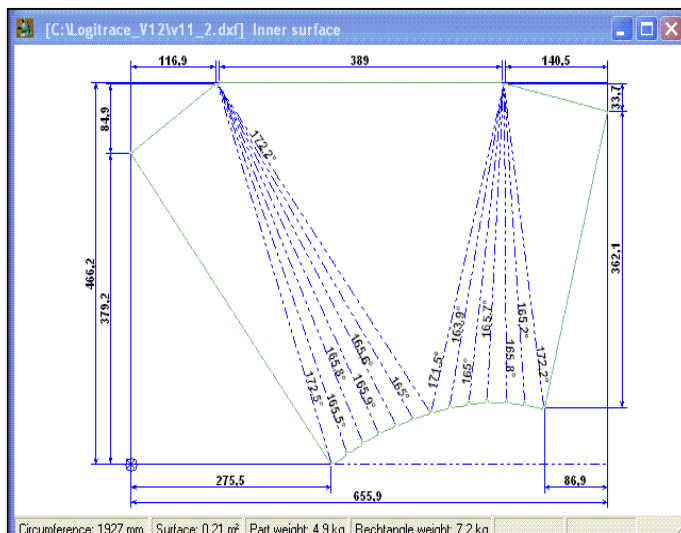
New symbols to help the interface to your CAD program



Selection of 3D parts now easier with a preview windows

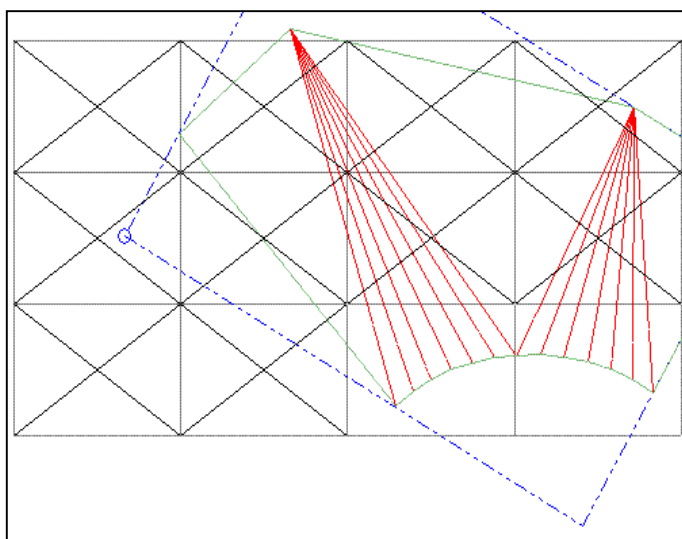


Both folding angles and notches can be printed on the same drawing

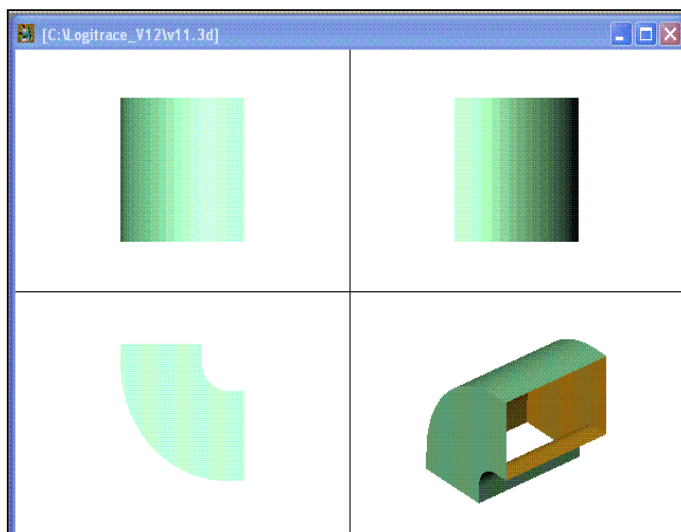


1:1 printout of the part greatly improved

Now the printable zone of the printer is simply ignored. That means that sheets can be lconnected edge to edge and the zone of the sheet that is not printed is ignored. That make manual marking of complex curves much faster than using coordinate lists.



Sheet thickness now taken into account on modules in the ventilation kit



General improvements

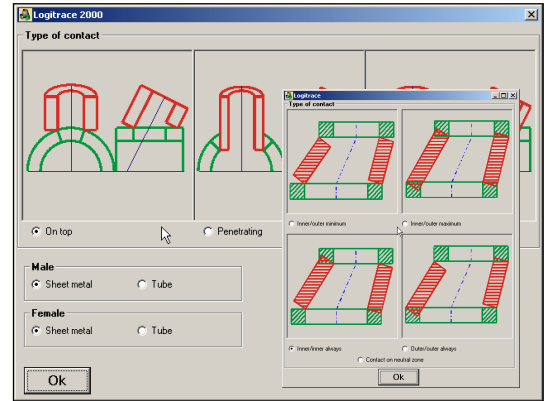
Lots of small improvements have also been made.

Better parts with less manual grinding work due to optimal treatment of sheet thickness:

With the new treatment of sheet thickness you reduce the amount of manual grinding work necessary. The height of the part is now calculated according to sheet thickness and is now very exact.

Open parts in AutoCAD® with only one mouse click:

AutoCAD® users can double click the drawing screen in LogiTRACE and we open in drawing automatically in AutoCAD®.




Automatic rolling curves and micro joints to aid rolling of parts:

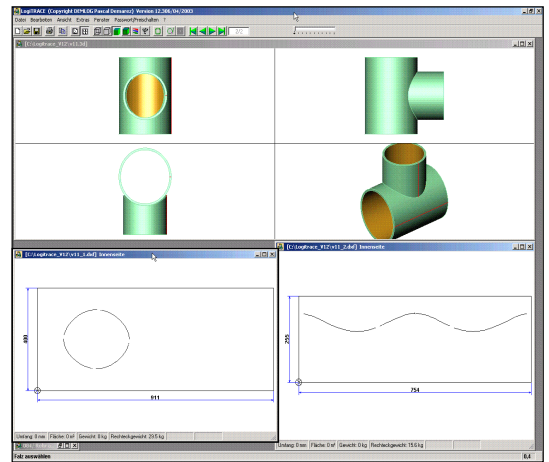
We generate automatic rolling curves and micro joints on the parts and holes in the sheet to aid rolling. We even take into account the kerf. Parts can then be rolled more easily and the micro joints separated at a later date.

Use our sample parts to get ideas

We supply a set of sample parts to give you ideas. You can modify these to fit your production parts.

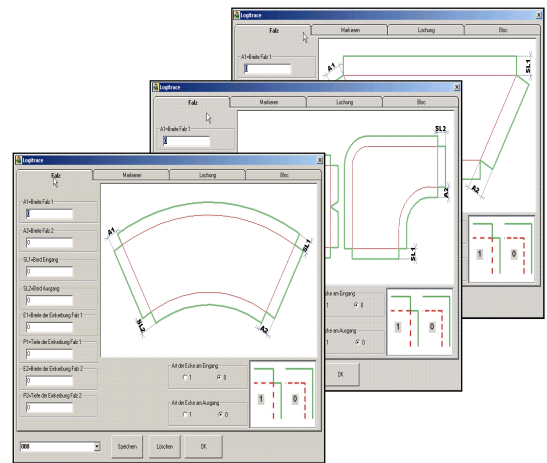
Extend the library by making your own modules and storing them in the snapshot library:

 With the expert modules and the snapshot function you can create own modules, store them in the snapshot screen and start them with the respective settings. You find your own modules more easily.



Improved seam/fold settings:

For the better understanding of the seams and fold settings there are now improved pictures of the seams and the meaning of the values.



New Modules

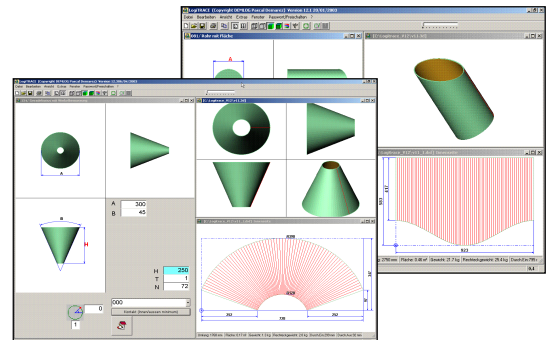
Starter kit

Module 081: Pipe cut by surface

This important module was moved from the classic kit 1 in version 11 to starter kit in version 12.

Module 154: Cone with angle dimension

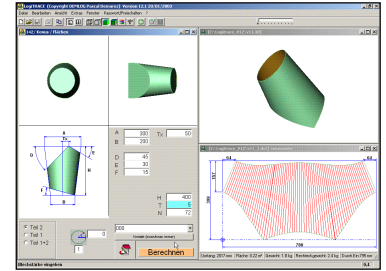
With this module you only need the large diameter and the angle.



Classic kit 1

Module 142: Cone / Plains

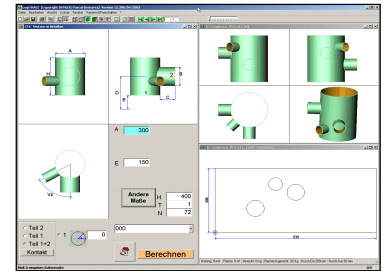
New module to cut a straight cone with up to 2 plains.



Classic kit 2

Module 134: Vessel with radial pipes

This very important module creates vessels any number of radial several pipes. We take into account the sheet thickness and whether the pipe is inserted into the vessel or sits on the outside. Here we also generate automatic rolling curves.



NEW: Classic kit 3

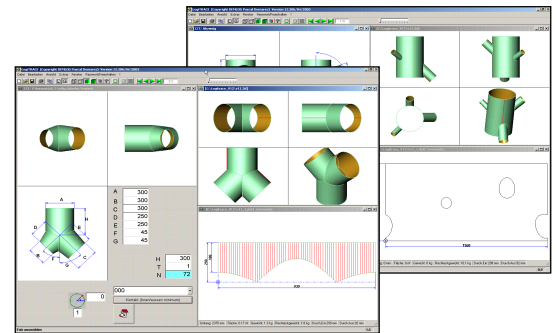
Classic kit 3 is very interesting for the construction of vessels and pipelines. 23 new modules for example:

Module 127: Vessel with freely definable pipes

Like vessel with radial pipes, but with additional angle settings.

Modules for Y joints

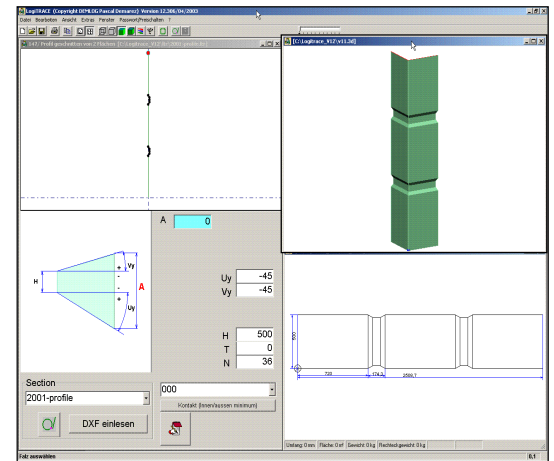
Many different modules for Y-joints, 3- to 5-part Y-joints in all different versions.



New expert modules

Module 147: Profile cut by 2 plains

A very powerful module. Here an example of a container corner. You draw a profile in any CAD and import it as a DXF file into LogiTRACE. The program creates a 3D body which you can cut or mitre as required by two plains set at any angle.



Module 146: Pipeline

A very interesting module for the creation of pipelines. You define a complete pipeline with XYZ coordinates of the pipeline and LogiTRACE calculates the development even adding optional segments/elbow joints.

